



Inspiring – TFL Colour Trends

» Autumn-Winter 2023–24



TFL – Great chemicals. Excellent advice.



Wearing

The painting by Roy Lichtenstein called “Study of Hands” (1980) adequately introduces the new TFL Fashion collection. The painting makes us reflect on how recently we have learned to not touch each other; we know that it is a temporary measure and that we will return to feeling comfortable with closeness in the not-too-distant future: “If you touch, you live”.

Let’s shelve sterile surfaces and go back to materials that celebrate colour, warmth and protection; materials that welcome the world and the lively energy in each and every one of us. So, bye-bye work-from-home dress code with its loungewear, slippers and baggy jumpers, and hello to feeling good, looking great and a renewed sense of style, for which fashion will give us the boost we need to get back on our feet.

Textiles have already embraced this new sentiment, and now leather is doing the same. Leather footwear mixes and matches impeccably with clothing featuring Victorian prints and mixes of patterns and bright colours, while sumptuously soft patent finishes on full-grain calfskins adorn women’s and children’s footwear. Delightfully soft bovine leathers, equally soft and supple lambskin, and goatskin with fine grain are the leathers of choice for creating maxi coats and trench coats in bright, glossy leather that blend in with high-gloss nappa maxi bags.

Leather bursts into the world of stripey and pinstriped fabrics and designs with innovative glossy brush-off surfaces, that when brushed reveal autumn-inspired chromatic foliage, super-subtle straight-line prints polishable on the tops with pearly leaden shades and coppery metallic shimmers.

Infinite praise for shoppers. Women still fancy this must-have accessory. Coloured shoppers featuring sculpted rounded grains with enamel effects or the uber-popular designs showcasing embossed reptile or ostrich effects with glossy glimmers on the tops.

When it comes to formal occasions, clutch bags may be smaller but they still have room for all your party essentials. Napped leathers embossed with an exciting choice of glazed animal-inspired micro-grains are all the rage, while clutches are more rigid and embellished with monograms and multicoloured accessories.

Boots are another must-have for the winter season, especially tube boots and equestrian-styled riding boots. We shouldn’t forget about the lining in bags and boots, as linings need to perform just as well as the leathers used for uppers and the exteriors of bags, so the focus is also on anti-ageing effects, anti-soiling solutions and naturally the handle.

THEMES:

- Soft Crunch
- Golden Dawn
- Phantom Driver
- Emerald Glassé
- Glowing Ants



TARGET:

- Ankle desert boots.
- Baseball bag with nappa pompons.
- Maxi basketball shoes.

↑ **DORSET** TPX 19-0915

↑ **BALMORAL** TPX 19-1116

↑ **THESEUS** TPX 17-1510

↑ **JAPAN** TPX 16-3916



Soft Crunch

Drum	1,50 %	SELLA® Fast Black A
	2,00 %	SELLA® Fast Brown CR
Finishing	42,30	RODA® Lite Black 07
	10,40	RODA® Lite Ochre 07
	8,50	RODA® Lite Yellow 07
	38,70	RODA® Lite Red Brown 07

↑ DORSET TPX 19-0915

Drum	4,00 %	SELLA® Fast Brown CR
Finishing	7,30	RODA® Lite Blue 07
	67,80	RODA® Lite Orange Brown 07
	23,80	RODA® Lite Red 07
	0,90	RODA® Lite Red Violet 07

↑ BALMORAL TPX 19-1116

Drum	4,00 %	SELLASOL® TN-FF liq
	0,75 %	SELLA® Fast Bordeaux A
	2,00 %	SELLA® Fast Brown CR
	0,25 %	SELLA® Fast Black A
Finishing	71,70	RODA® Lite White 07
	4,20	RODA® Lite Black 07
	16,30	RODA® Lite Ochre 07
	7,80	RODA® Lite Red 07

↑ THESEUS TPX 17-1510

Drum	4,00 %	SELLASOL® TN-FF liq
	0,70 %	SELLA® Fast Grey C-LL
Finishing	86,30	RODA® Lite White 07
	1,80	RODA® Lite Blue 07
	6,00	RODA® Lite Yellow 07
	5,80	RODA® Lite Fuchsia 07

↑ JAPAN TPX 16-3916

All RODA® Lite 07 formulations are applied on no-dyed crust and quantities are expressed in grams per liter.

Golden Dawn



TARGET:

- Knitted bag with metallic leather stripes.
- Quilted boots.
- Fur and tufted perlized nappa slippers.



Golden Dawn

↑ **MAORI** TPX 19-2118

↑ **AZTEK** TPX 19-3915

↑ **BIBA** TPX 19-2430

↑ **FUEGO** TPX 16-1255



Golden Dawn

Drum 2,80 % SELLA® Fast Brown DZ 150%

Finishing 13,00 RODA® Lite Blue 07
36,70 RODA® Lite Ochre 07
5,50 RODA® Lite Red Violet 07
54,60 RODA® Lite Fuchsia 07

↑ MAORI TPX 19-2118

Drum 2,00 % SELLASET® Black BR
1,00 % SELLASET® Blue HN

Finishing 30,60 RODA® Lite White 07
24,70 RODA® Lite Blue 07
29,80 RODA® Lite Red 07
14,70 RODA® Lite Orange 07

↑ AZTEK TPX 19-3915

Drum 2,50 % SELLA® Fast Bordeaux A
0,50 % SELLA® Fast Red A

Finishing 10,40 RODA® Lite White 07
30,40 RODA® Lite Violet Brown 07
26,70 RODA® Lite Red Violet 07
32,30 RODA® Lite Fuchsia 07

↑ BIBA TPX 19-2430

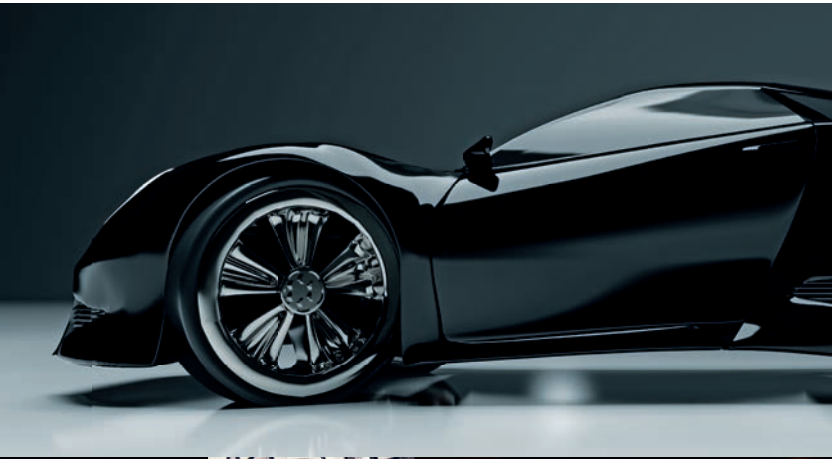
Drum 3,00 % SELLA® Fast Orange A
0,50 % SELLA® Fast Yellow R

Finishing 8,50 RODA® Lite White 07
0,50 RODA® Lite Blue 07
78,00 RODA® Lite Yellow 07
13,20 RODA® Lite Orange 07

↑ FUEGO TPX 16-1255

All RODA® Lite 07 formulations are applied on no-dyed crust and quantities are expressed in grams per liter.

Phantom Driver



TARGET:

- Nappa jacket framed with metallic zippers.
- Polished loafers with brushed clamps.
- Equestrian long boots with veg leather profiles.



Phantom Driver

↑ **MILTON** TPX 19-4305

↑ **ABBEY** TPX 19-4030

↑ **RODRIGO** TPX 17-1046

↑ **TAMO** TPX 19-3905



Phantom Driver

Drum	4,00 %	SELLA® Fast Black WB
Finishing	12,20	RODA® Lite Black 07
	43,20	RODA® Lite Blue 07
	36,30	RODA® Lite Orange Brown 07
	8,10	RODA® Lite Red Brown 07

↑ MILTON TPX 19-4305

Drum	1,00 %	SELLASET® Blue HN
	3,00 %	SELLA® Fast Navy A
Finishing	38,70	RODA® Lite White 07
	16,30	RODA® Lite Blue 07
	27,60	RODA® Lite Violet Brown 07
	17,30	RODA® Lite Fuchsia 07

↑ ABBEY TPX 19-4030

Drum	1,20 %	SELLA® Fast Yellow R
	2,50 %	SELLA® Fast Orange A
Finishing	16,80	RODA® Lite White 07
	0,60	RODA® Lite Black 07
	68,90	RODA® Lite Yellow 07
	13,80	RODA® Lite Orange 07

↑ RODRIGO TPX 17-1046

Drum	1,50 %	SELLASET® Black BR
	0,20 %	SELLA® Fast Brown DS
Finishing	65,80	RODA® Lite White 07
	19,90	RODA® Lite Black 07
	8,70	RODA® Lite Red 07
	5,50	RODA® Lite Violet Brown 07

↑ TAMO TPX 19-3905

All RODA® Lite 07 formulations are applied on no-dyed crust and quantities are expressed in grams per liter.

Emerald Glassé



TARGET:

- Stretch-lace patent boots.
- Brush-off mocassin with rubber accessories.
- Cylindrical crossbody bag.



Emerald Glassé

↑ **PERSIMON** TPX 19-5917

↑ **ELFO** TPX 16-1054

↑ **KREMISI** TPX 19-3542

↑ **MELINDA** TPX 17-1744



Emerald Glassé

Drum	2,80 %	SELLA® Fast Green GDN
	0,20 %	SELLA® Fast Green GM
Finishing	37,80	RODA® Lite Blue 07
	21,70	RODA® Lite Ochre 07
	35,20	RODA® Lite Yellow 07
	5,30	RODA® Lite Violet Brown 07

↑ PERSIMON TPX 19-5917

Drum	2,50 %	SELLA® Fast Orange 2GC
	1,50 %	SELLA® Fast Brown HH 150%
Finishing	8,20	RODA® Lite White 07
	58,00	RODA® Lite Ochre 07
	32,30	RODA® Lite Yellow 07
	1,30	RODA® Lite Orange 07

↑ ELFO TPX 16-1054

Drum	2,20 %	SELLA® Fast Red F
	0,80 %	SELLA® Fast Violet RL
Finishing	33,70	RODA® Lite White 07
	4,40	RODA® Lite Blue 07
	0,50	RODA® Lite Orange 07
	61,80	RODA® Lite Fuchsia 07

↑ KREMISI TPX 19-3542

Drum	0,80 %	SELLA® Fast Red RTN
	0,20 %	SELLA® Star Sahara
Finishing	20,00	RODA® Lite Red 07
	65,00	RODA® Lite White 07
	10,00	RODA® Lite Fuchsia 07
	5,00	RODA® Lite Ochre 07

↑ MELINDA TPX 17-1744

All RODA® Lite 07 formulations are applied on no-dyed crust and quantities are expressed in grams per liter.

Glowing Ants



TARGET:

- Oversized long trousers.
- Hand-crocheted patchwork split bag.
- Hooded suede sweatshirt.

↑ **ARGO** TPX 19-3952

↑ **JINGLE** TPX 18-1445

↑ **HOLA** TPX 13-0859

↑ **TIC TOC** TPX 15-2214



Glowing Ants

Drum	4,00 %	SELLA® Fast Blue A
	0,30 %	SELLA® Fast Bordeaux A
Finishing	95,00	RODA® Lite Blue 07
	2,00	RODA® Lite Red Violet 07
	2,50	RODA® Lite Fuchsia 07
	0,50	RODA® Lite White 07

↑ ARGO TPX 19-3952

Drum	2,50 %	SELLA® Fast Red A
	0,50 %	SELLA® Fast Red Brown A
Finishing	13,40	RODA® Lite White 07
	38,40	RODA® Lite Yellow 07
	7,10	RODA® Lite Red 07
	41,00	RODA® Lite Orange 07

↑ JINGLE TPX 18-1445

Drum	1,50 %	SELLA® Fast Yellow 4GL
	2,50 %	SELLA® Fast Yellow R
Finishing	90,00	RODA® Lite Yellow 07
	10,00	RODA® Lite Lemon 07
	0,50	RODA® Lite Red Brown 07
	0,50	RODA® Lite White 07

↑ HOLA TPX 13-0859

Drum	0,20 %	SELLA® Fast Red RTN
Finishing	87,50	RODA® Lite White 07
	1,00	RODA® Lite Ochre 07
	2,50	RODA® Lite Red 07
	9,30	RODA® Lite Fuchsia 07

↑ TIC TOC TPX 15-2214

All RODA® Lite 07 formulations are applied on no-dyed crust and quantities are expressed in grams per liter.

Never before has the Living collection for home and offices buzzed with as much colour as it does for the coming winter season.

Brimming with bold, vibrant and clean shades, the leather colours are more realistic and embody the colour spectrum of light. This paves the way for a wider array of tanning solutions, such as chrome, chrome-free, metal-free and synthetic-vegetable, even for the furnishings sector that so often favours chrome.

We begin our journey by looking at one of the most important factors worldwide: the pervious nature of homes and offices to glances from outside and activities from within. We prefer projects conveying transparency and luminosity that take the inside outside by throwing open windows and doors. So, with this in mind, all leathers should “quietly” become part of a universe of other raw materials, enabling them to blend in with all the new organic forms, thus enthusiastically endorsed by architecture studios.

Pure vegetable-tanned leathers and their alternatives are selected for their appreciable thicknesses, such as 2.6 / 2.8 mm, clean colours, water repellency and most of all for their flexibility. We see this in the new designs that are interwoven “by hand” to create a composite web, capable of supporting skeletal seating that is so elegant and stylishly imbued with soft pastel tones of sky blue, salmon pink and the all-essential cognac, that it almost becomes one with the surrounding interiors.

Within this quest for transparent yet functional solutions, bovine leathers and calfskin are mostly vegetable tanned and placed side by side with real wood. Tinged with hues of larch, oak, beech and cherry wood, they blend in harmoniously and create dovetailed geometric surfaces and seamless shades of colour.

For leather to be on the same wavelength as all other natural materials, it must opt for high performing finishes that protect it from the everyday use at home and at the workplace. Napped finishes with a faintly pull-up handle are more desirable than satiny looks or matte effects with a waxy or subtly worn feel. Not only in Finishing, but in TFL’s whole chemical range there is a great focus on products consisting of renewable materials.

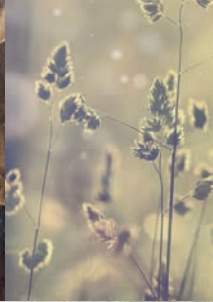
In addition to the pursuit of style and practical comfort, we should also explore the intimate comfort provided by leather, and especially how we use it throughout the world of padded furniture, which is now curvier than ever, to create a kind of warm enveloping embrace that intensifies the familiar feeling. Nubuck and all versions of scratched, satiny or sanded finishes epitomise this better than any other article. Retanned leathers with stretchy handles in understated colours, such as aquamarine, stone grey and powder pink are also enhancing such a warm feeling.

THEMES:

→ Mystic Gardens

→ Columbus Goal

Mystic Gardens



TARGET:

- Organic circular suede carpets trimmed with fake furs.
- Modular soft sofas.
- Leather vases with japanese ceramic handles.



Mystic Gardens

↑ **YORKS** TPX 18-0617

↑ **NINEVE** TPX 12-0817

↑ **ANTIGUA** TPX 14-0850

↑ **BASCO** TPX 16-0000



Mystic Gardens

Drum	2,00 %	SELLA® Fast Brown CR
	0,70 %	SELLA® Fast Green A
	0,20 %	SELLA® Fast Black A
Finishing	34,00	RODA® Lite White 07
	10,00	RODA® Lite Blue 07
	35,20	RODA® Lite Ochre 07
	27,40	RODA® Lite Violet Brown 07

↑ YORKS TPX 18-0617

Drum	4,00 %	SELLASOL® TN-FF liq
	1,00 %	SELLA® Fast Orange 2GC
Finishing	92,50	RODA® Lite White 07
	0,40	RODA® Lite Blue 07
	6,20	RODA® Lite Orange Brown 07
	1,20	RODA® Lite Yellow 07

↑ NINEVE TPX 12-0817

Drum	2,60 %	SELLA® Fast Yellow R
	0,40 %	SELLA® Fast Orange 2GC
Finishing	43,30	RODA® Lite White 07
	2,80	RODA® Lite Orange Brown 07
	16,30	RODA® Lite Yellow 07
	37,60	RODA® Lite Lemon 07

↑ ANTIGUA TPX 14-0850

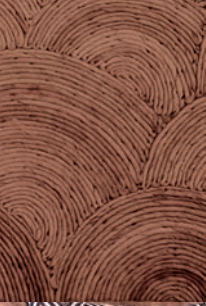
Drum	0,45 %	SELLA® Fast Grey C-LL
	0,15 %	SELLA® Fast Brown C-G
Finishing	90,20	RODA® Lite White 07
	3,10	RODA® Lite Black 07
	5,50	RODA® Lite Lemon 07
	1,10	RODA® Lite Fuchsia 07

↑ BASCO TPX 16-0000

All RODA® Lite 07 formulations are applied on no-dyed crust and quantities are expressed in grams per liter.



Columbus Goal



TARGET:

- Sculptural wooden chairs and soft leather pillow in brass colours.
- Solid vegetal vacchetta table with pine legs.
- Interior cabinet hand-crafted in oak and nubuk calfs.

↑ **FAGGIO** TPX 16-1310

↑ **LARICE** TPX 16-0940

↑ **CILIEGIO** TPX 18-1340

↑ **ROVERE** TPX 19-0617



Columbus Goal

Drum	1,00 %	SELLA® Fast Brown A
	0,30 %	SELLA® Fast Havana A
Finishing	74,60	RODA® Lite White 07
	2,00	RODA® Lite Black 07
	16,50	RODA® Lite Ochre 07
	6,70	RODA® Lite Orange 07

↑ FAGGIO TPX 16-1310

Drum	1,00 %	SELLA® Fast Brown HG
Finishing	50,00	RODA® Lite White 07
	4,00	RODA® Lite Blue 07
	43,00	RODA® Lite Ochre 07
	5,30	RODA® Lite Orange 07

↑ LARICE TPX 16-0940

Drum	2,00 %	SELLA® Fast Brown HC
Finishing	22,50	RODA® Lite Orange Brown 07
	23,70	RODA® Lite Yellow 07
	22,40	RODA® Lite Red Brown 07
	31,30	RODA® Lite Orange 07

↑ CILIEGIO TPX 18-1340

Drum	3,50 %	SELLA® Star Coffee
	0,40 %	SELLA® Star Copper
Finishing	7,10	RODA® Lite White 07
	8,20	RODA® Lite Blue 07
	43,60	RODA® Lite Ochre 07
	40,90	RODA® Lite Orange 07

↑ ROVERE TPX 19-0617

All RODA® Lite 07 formulations are applied on no-dyed crust and quantities are expressed in grams per liter.

